



**Ventura County Transportation Commission**

Presentation to  
**Greater Conejo Valley  
Chamber of Commerce**

May 6, 2011



**“Have you ever noticed that anybody driving slower than you is an idiot, and anyone going faster than you is a maniac?”**

**George Carlin**





# Why We're Here

- We're building a Comprehensive Transportation Plan!
- Built from the region's:
  - Visions
  - Challenges
  - Priorities





# VCTC Overview

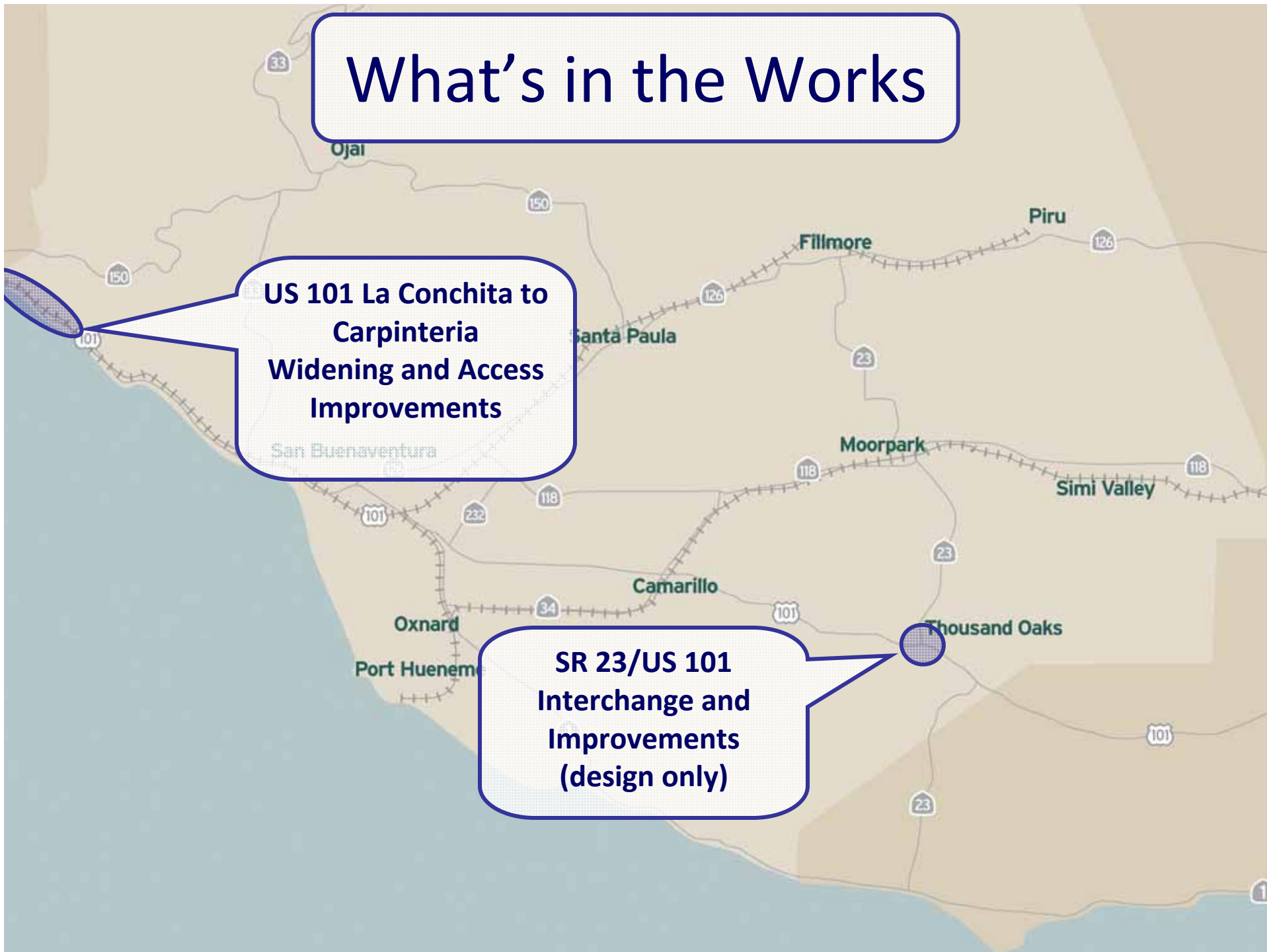
- Regional transportation planning agency
  - Policy and Planning
  - Funding and Management
- Key roles and responsibilities:
  - Highway and transit funder
  - Metrolink partner
  - VISTA operator
  - Rideshare and information



# What's in the Works

**US 101 La Conchita to  
Carpinteria  
Widening and Access  
Improvements**

**SR 23/US 101  
Interchange and  
Improvements  
(design only)**





# Priority **Unfunded** Projects

- SR 118 Widening (\$168M):
  - Simi Valley to Moorpark (Phase III) – Close the Gap
- US 101 Widening:
  - LA Co. Line to SR 33 (Replace Interchanges and Ramps)
  - Mainline = \$369M
  - Total = \$942M
- SR 126:
  - Widening within Fillmore City Limits
  - Southbound Connector to US 101



# What We're Seeing Now

- Steady commute times and congestion levels despite the recession
- Worsening bottlenecks:
  - US 101 Thousand Oaks, Conejo Grade, Camarillo, Santa Clara River Bridge
  - US 101/SR 23 interchange
  - SR 118 Moorpark to Simi
- Deteriorating road conditions



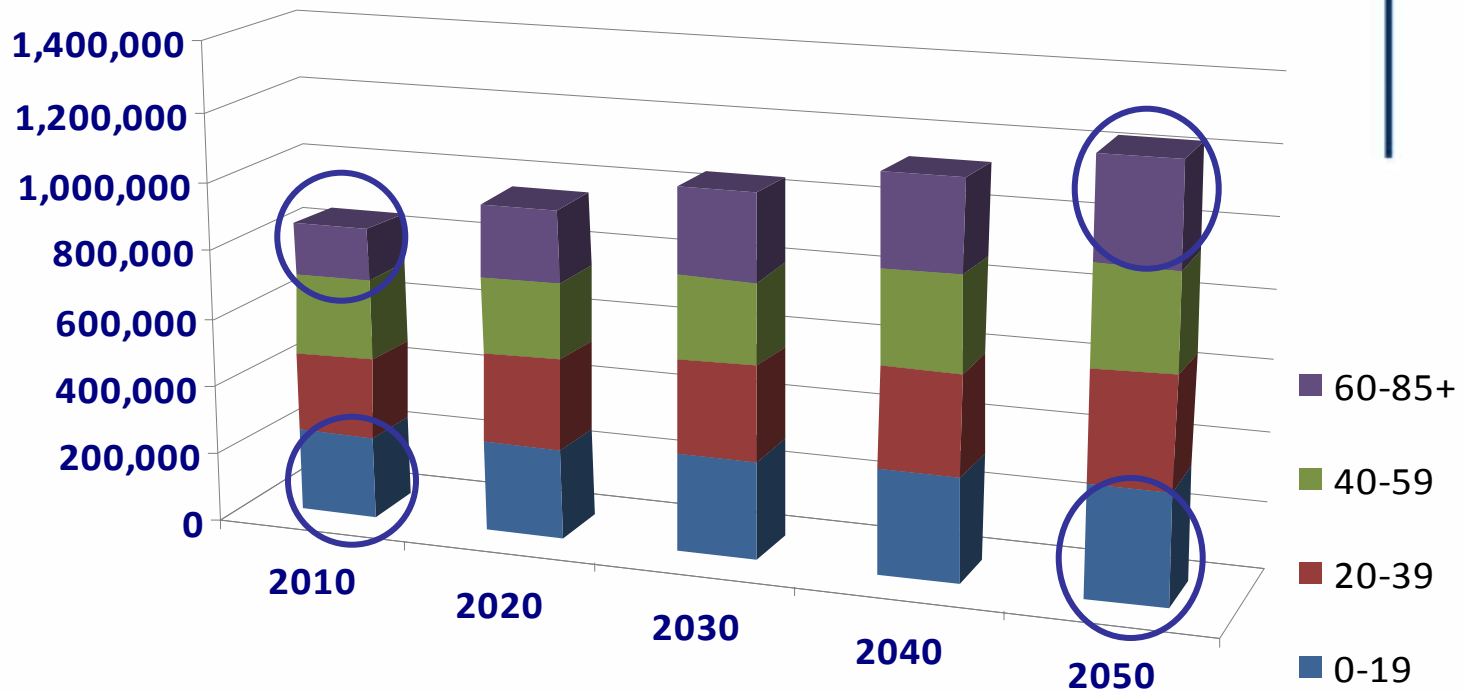
# What We're Seeing Now

- Under-utilized transit (1.2% of work trips)
- Service not to standard
  - 60-minute commuter bus
  - 3 morning Metrolink trains from Oxnard vs. 10 from San Bernardino
- Multiple, disconnected local transit services
- Growing special needs demand



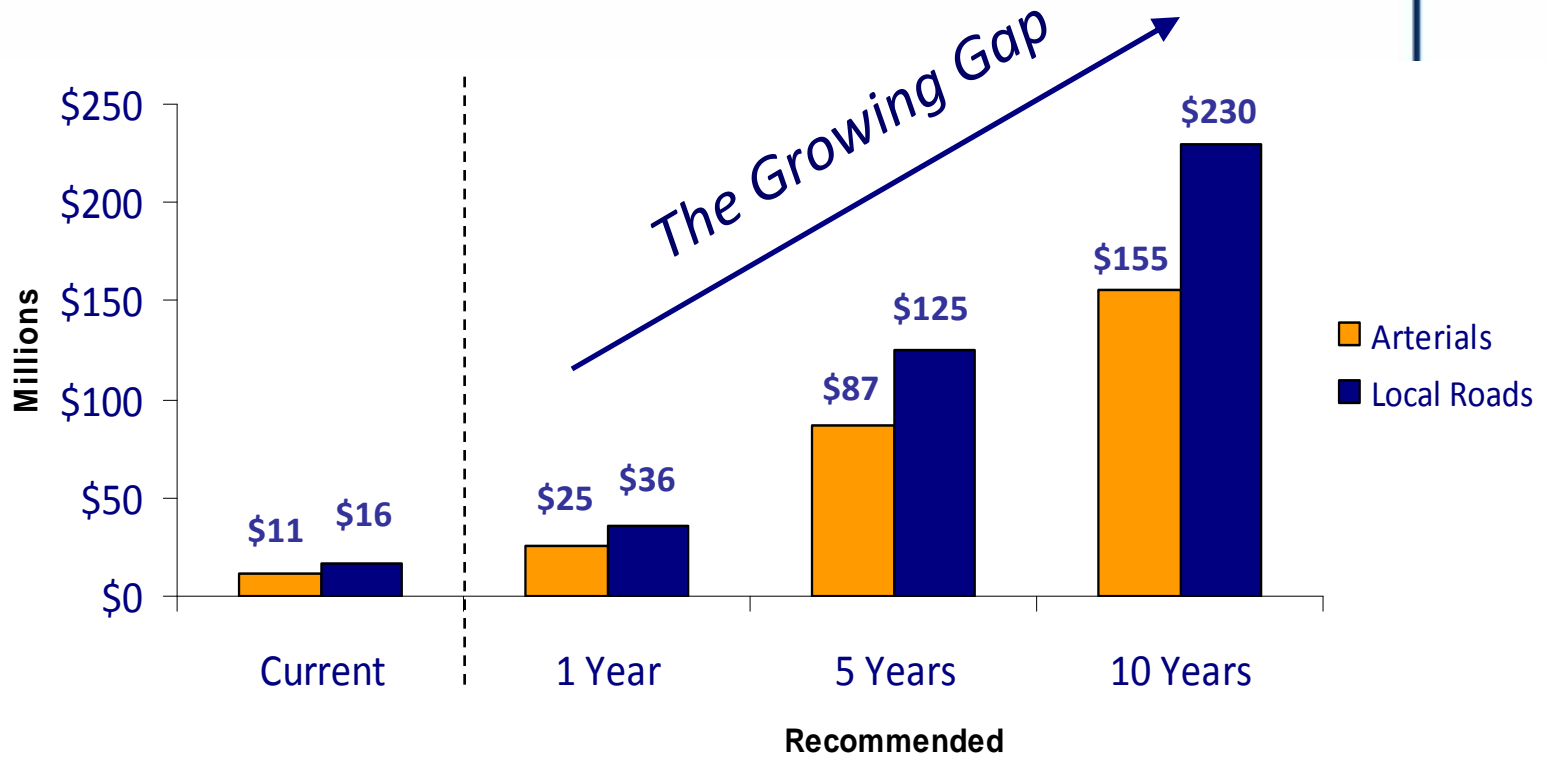
# Population Will Grow by 43%

*Seniors Will Double*  
*Youth Will Increase by 50%*





# Funding: Local Roads





# How to Drive the Future

- Identify regional priorities
- Account for local needs
- Develop a strategic funding plan
- Build ownership region-wide

*It's YOUR plan!*

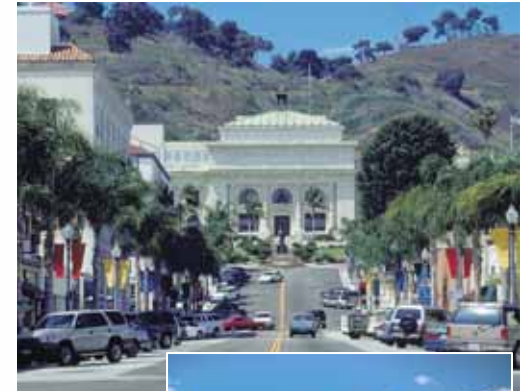




# Talking with the Community

The key things we hear:

- Preserve quality of life
- Mobility is a top priority
  - Invest in the system
  - Strengthen alternatives
  - Create new solutions
- Promote development within city limits





# We're Listening

- What are your priorities, more specifically?
- What is the role of transportation in building quality of life?
- What are the challenges?



# Next Steps

- Conduct wide-ranging outreach
- Identify priorities
- Develop the plan and funding strategy
- Seek public review and support of the plan
- Implement the plan!



**Ventura County Transportation Commission**

Presentation to  
**Greater Conejo Valley  
Chamber of Commerce**

May 6, 2011