



Ventura County Transportation Commission

Presentation to
**Greater Conejo Valley
Chamber of Commerce**

May 6, 2011



“Have you ever noticed that anybody driving slower than you is an idiot, and anyone going faster than you is a maniac?”

George Carlin





Why We're Here

- We're building a Comprehensive Transportation Plan!
- Built from the region's:
 - Visions
 - Challenges
 - Priorities





VCTC Overview

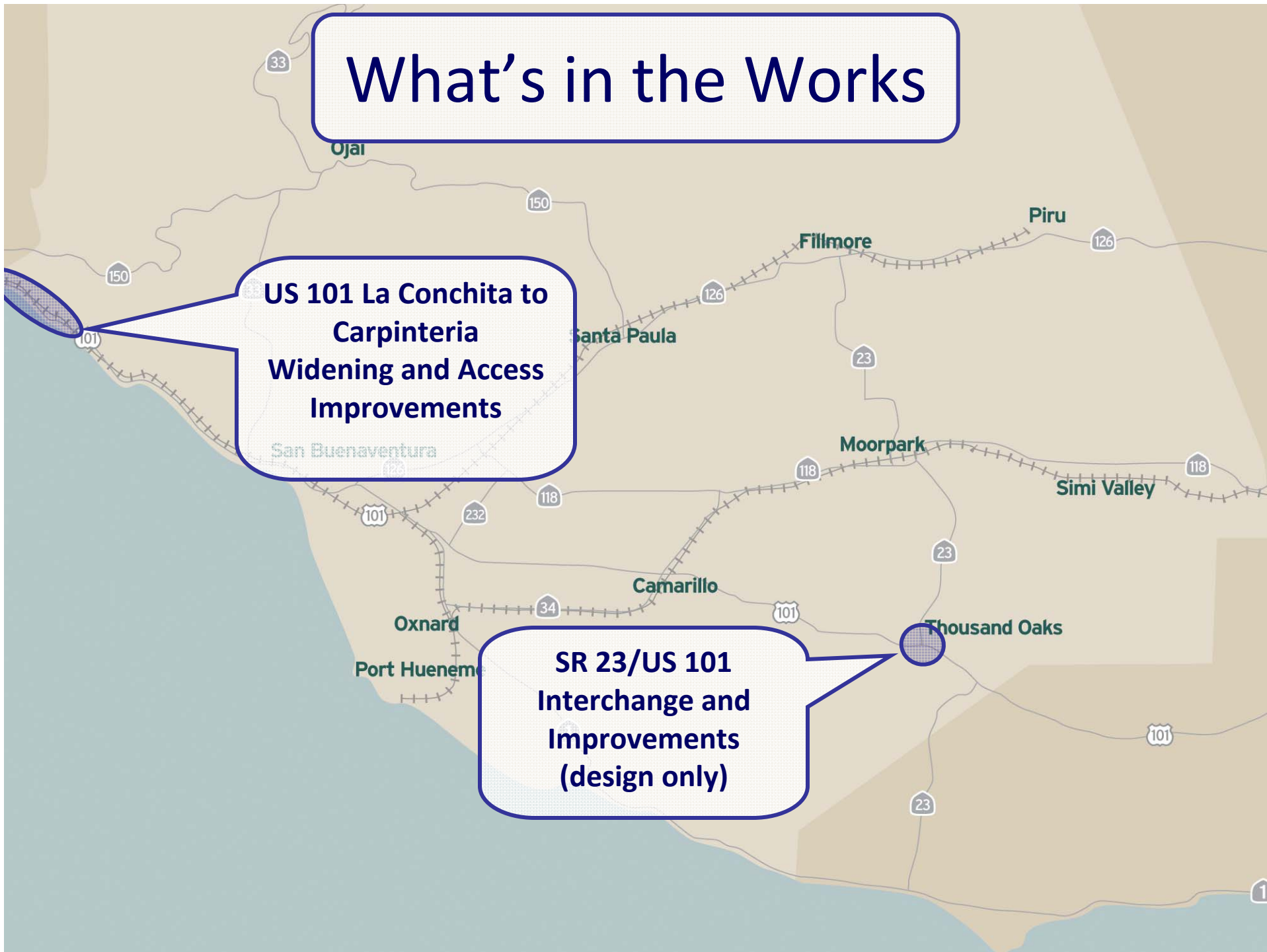
- Regional transportation planning agency
 - Policy and Planning
 - Funding and Management
- Key roles and responsibilities:
 - Highway and transit funder
 - Metrolink partner
 - VISTA operator
 - Rideshare and information



What's in the Works

**US 101 La Conchita to
Carpinteria
Widening and Access
Improvements**

**SR 23/US 101
Interchange and
Improvements
(design only)**





Priority **Unfunded** Projects

- SR 118 Widening (\$168M):
 - Simi Valley to Moorpark (Phase III) – Close the Gap
- US 101 Widening:
 - LA Co. Line to SR 33 (Replace Interchanges and Ramps)
 - Mainline = \$369M
 - Total = \$942M
- SR 126:
 - Widening within Fillmore City Limits
 - Southbound Connector to US 101



What We're Seeing Now

- Steady commute times and congestion levels despite the recession
- Worsening bottlenecks:
 - US 101 Thousand Oaks, Conejo Grade, Camarillo, Santa Clara River Bridge
 - US 101/SR 23 interchange
 - SR 118 Moorpark to Simi
- Deteriorating road conditions



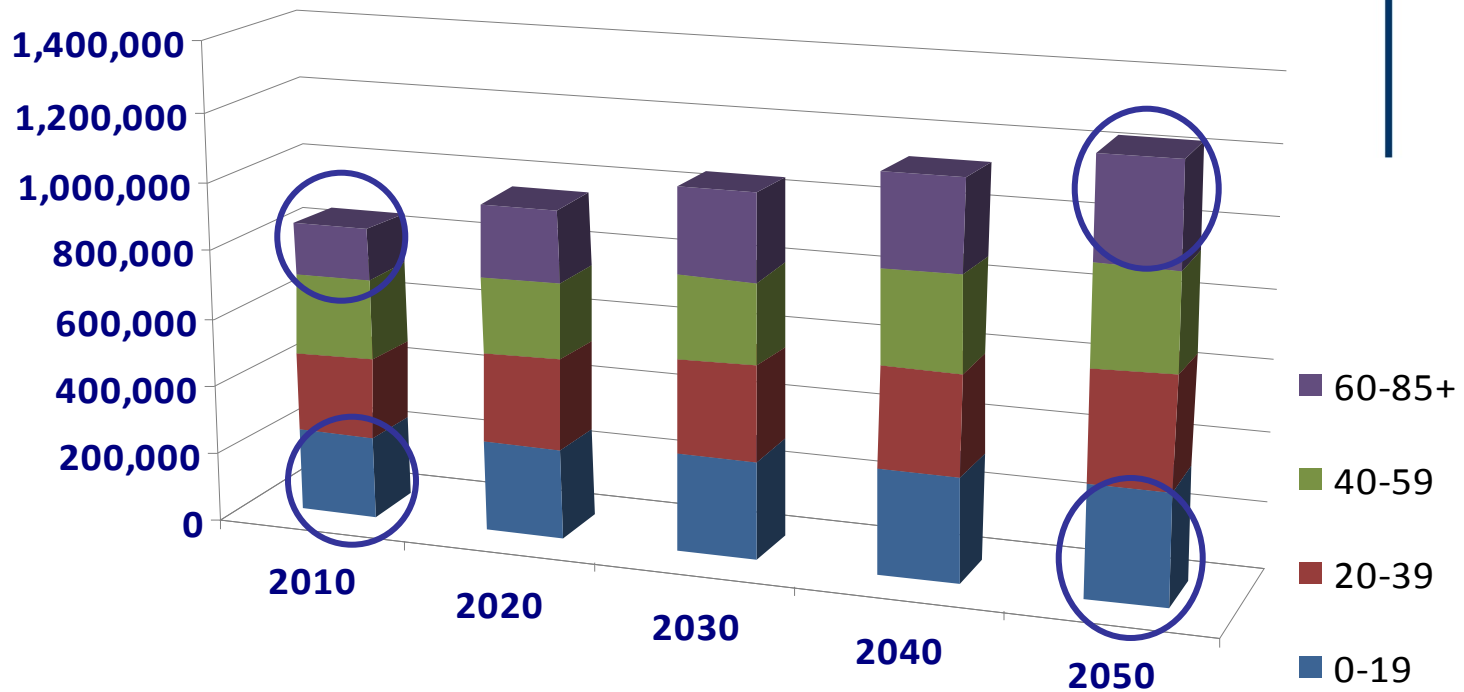
What We're Seeing Now

- Under-utilized transit (1.2% of work trips)
- Service not to standard
 - 60-minute commuter bus
 - 3 morning Metrolink trains from Oxnard vs. 10 from San Bernardino
- Multiple, disconnected local transit services
- Growing special needs demand



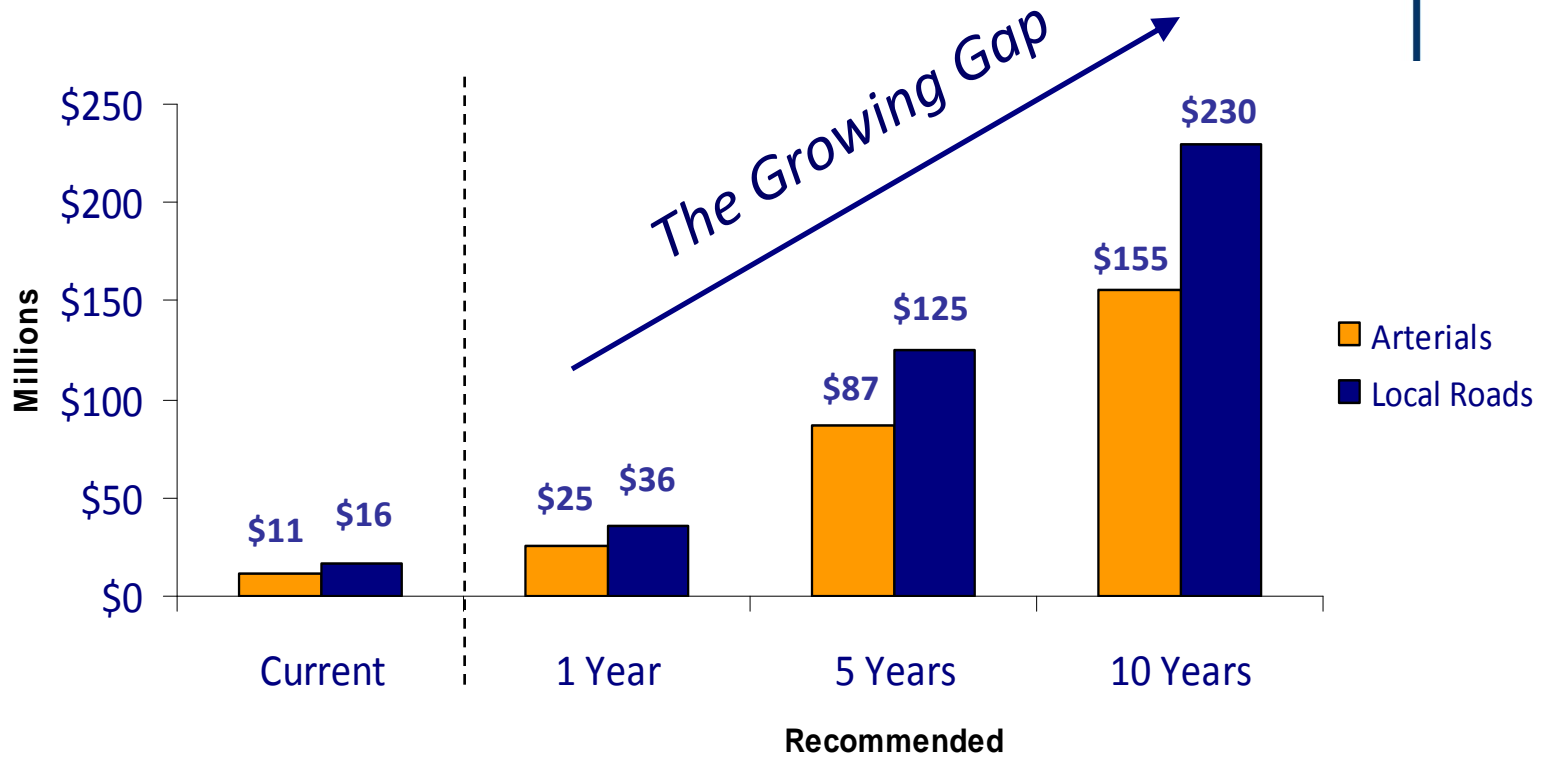
Population Will Grow by 43%

Seniors Will Double
Youth Will Increase by 50%





Funding: Local Roads





How to Drive the Future

- Identify regional priorities
- Account for local needs
- Develop a strategic funding plan
- Build ownership region-wide

It's YOUR plan!

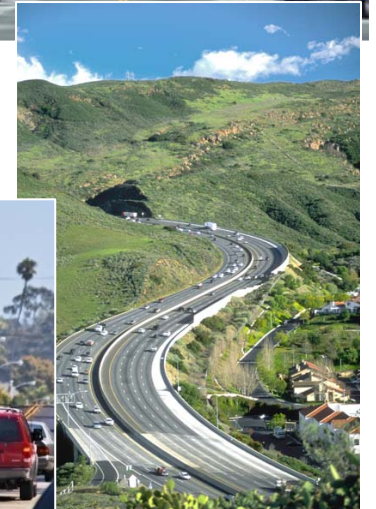
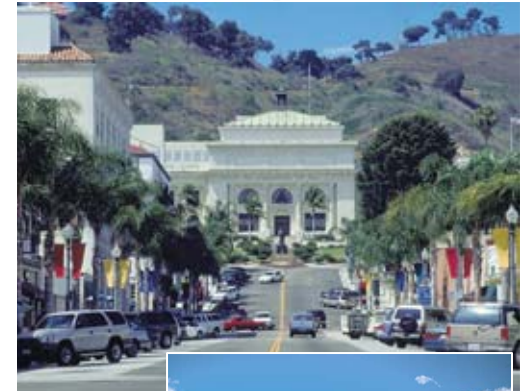




Talking with the Community

The key things we hear:

- Preserve quality of life
- Mobility is a top priority
 - Invest in the system
 - Strengthen alternatives
 - Create new solutions
- Promote development within city limits





We're Listening

- What are your priorities, more specifically?
- What is the role of transportation in building quality of life?
- What are the challenges?



Next Steps

- Conduct wide-ranging outreach
- Identify priorities
- Develop the plan and funding strategy
- Seek public review and support of the plan
- Implement the plan!



Ventura County Transportation Commission

Presentation to
**Greater Conejo Valley
Chamber of Commerce**

May 6, 2011